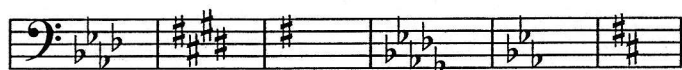


Points

Points

1. Major Key Signatures 6
C# Maj., Eb Maj., E Maj., A Maj., Db Maj., Gb Maj.

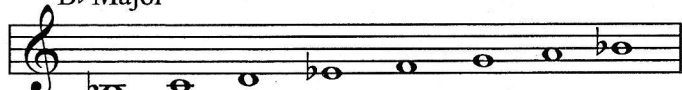
2. Minor Key Signatures 6



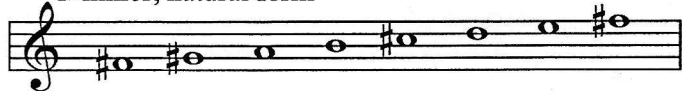
f min. c# min. e min. bb min. c min. b min.

3. Scales - Writing 3

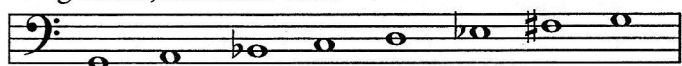
Bb Major



f# minor, natural form

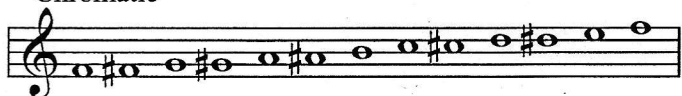


g minor, harmonic form



4. Scales - Adding Accidentals 3

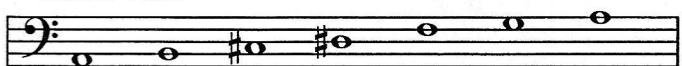
Chromatic



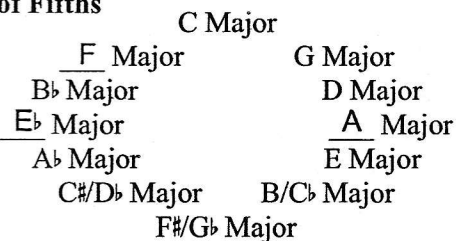
d minor, melodic form



Whole Tone



5. Circle of Fifths 3



6. Intervals - Writing 6



P4 d8 m2 d7 A6 M3

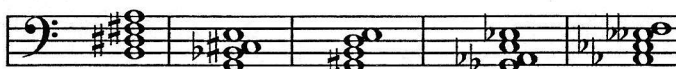
7. Triads - Naming (Do not delete points if student adds incorrect figured bass) 6

b diminished, E Augmented, Ab Augmented, c# minor, F Major, gb minor

8. Figured Bass 6

5 6 6 6 5 6
3 4 4 3 3 3

9. Seventh Chords - Adding Accidentals 5



B Dom 7 c# dim 4 E Dom 6 Ab Dom 4 f dim 6

10. Dominant Seventh Chords - Keys 5

F# Major, Eb Major, G Major, Bb Major, A Major

11. Scale Degree Names 5

(Tonic), Dominant, Submediant, Subdominant, Leading Tone, Supertonic

12. Cadences 4

Plagal, Deceptive, Authentic, Half

13. Transposition (Also accept one octave lower) 1



14. Modes 2

- a. Dorian
- b. Ionian

15. Composers 4

- a. Baroque
- b. Classical
- c. Scarlatti and Telemann
- d. Contemporary

Points

Points

16. Enharmonics 2



17. Rhythm - Counts (Only main beats are required. Sub-beats must be accurate if included.) 2



18. Terms - Multiple Choice 8

- canon
- meno*
- ritenuto*
- Sonata form
- piu*
- senza*
- allargando*
- pesante*

Musical Example by J.S. Bach 14

- E \flat Major
- sequence
- A \flat Major
- D flat (D \flat) and D natural (D \natural) (accept \flat and \natural)



24. Appoggiatura



- Hold the note longer than its value
- Baroque
- P4
 - m2
 - M2
 - m6

Musical Example by Mendelssohn 14

- e minor
- walking tempo
- i $\overset{6}{4}$
 - ii $\overset{6}{0}$ (or ii $\overset{6}{0}$ 3)
 - $\overset{5}{V}$ (or $\overset{5}{V}$ 3)
 - $\overset{5}{VI}$ (or $\overset{5}{VI}$ 3)
 - iv (or iv 3)
 - i $\overset{6}{6}$ (or i 3)
- medium loud
 - gradually louder
 - a sudden sharp accent
 - soft
 - gradually softer
- Romantic

Ear Training (Set B) 13

- minor
- Yes
- Ex. 1: diminished
Ex. 2: Major
- Ex. 1: minor 7th
Ex. 2: Augmented 5th
- Ex. 1: melodic minor
Ex. 2: harmonic minor
Ex. 3: natural minor
- B
- $\overset{4}{4}$ time
- Giocoso
- Deceptive